

Cylinder Head Overview



Note

- ◆ Only remove the plastic protectors installed to protect the open valves immediately before installing the cylinder head.
- ◆ If the cylinder head is going to be replaced, then it is also necessary to replace all the coolant.

1 - Cylinder Head

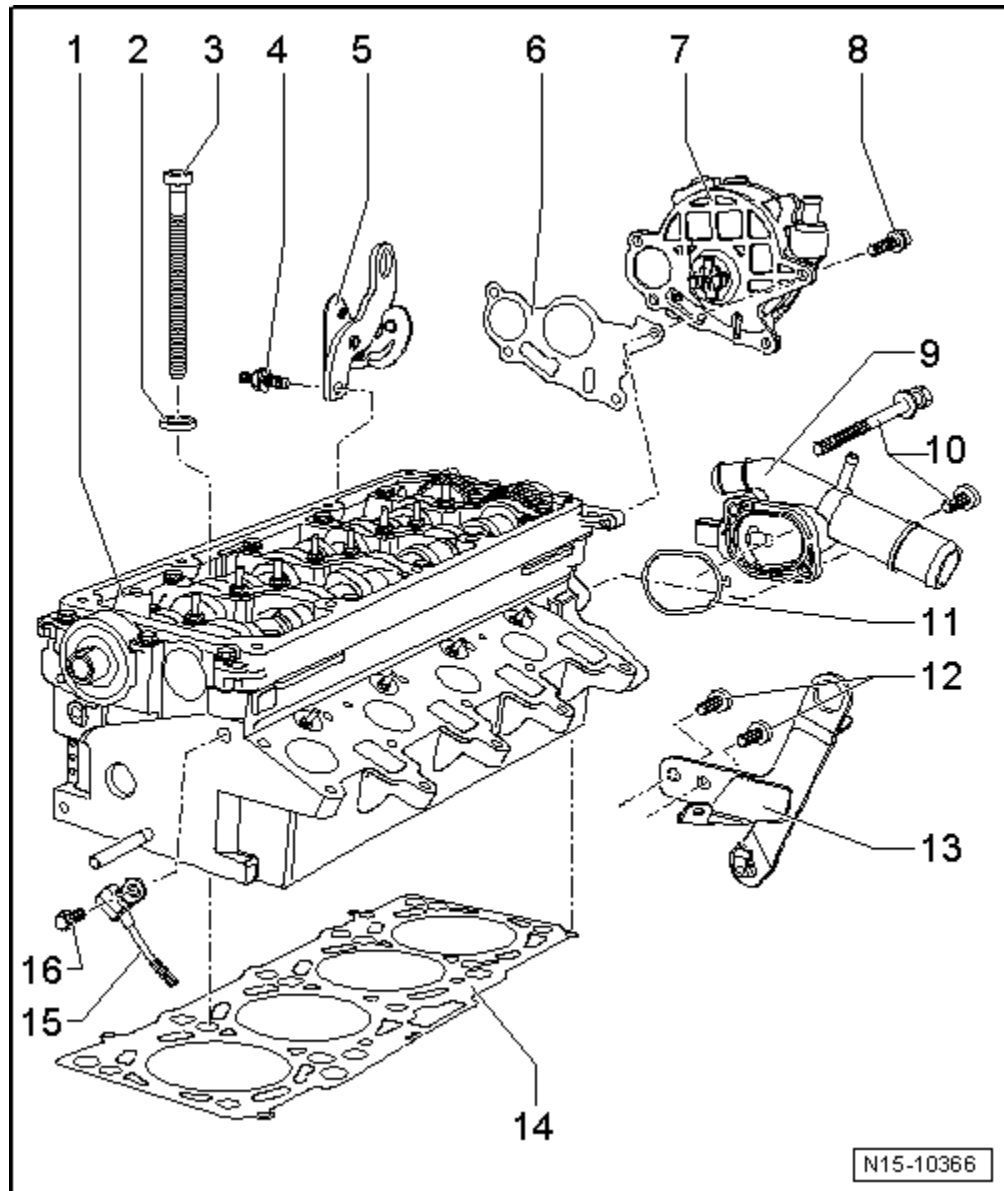
- Removing and installing, refer to → Chapter „Cylinder Head“.
- After replacing, replace the entire amount of coolant.

2 - Washer

- For the cylinder head bolts

3 - Cylinder Head Bolt

- Follow the sequence for loosening and tightening, refer to → Chapter „Cylinder Head“.
- Place the washers - item 2- onto the cylinder head before installing the cylinder head bolts.



4 - Bolt

- 25 Nm

5 - Lifting Eye

6 - Gasket

- Always replace.

7 - Vacuum Pump

- Removing and installing, refer to → [Chapter „Vacuum Pump“](#).

8 - Bolt

- 10 Nm

9 - Coolant Connection**10 - Bolt**

- 10 Nm

11 - Seal

- Always replace.

12 - Bolt

- 25 Nm

13 - Lifting Eye**14 - Cylinder Head Gasket**

- Always replace.
- Observe the identification, refer to → [Chapter „Cylinder Head Gasket Identification“](#).
- After replacing, replace the entire amount of coolant.

15 - Camshaft Position Sensor -G40-

- For camshaft position.

16 - Bolt

- 10 Nm

Checking the Cylinder Head for Distortion**Special tools and workshop equipment required**

- ◆ Straight Edge 500 mm -VAS 6075-
- ◆ Feeler Gauge

Maximum permissible distortion: 0.1 mm

**Note**

Remanufacturing diesel cylinder heads is not permitted.

